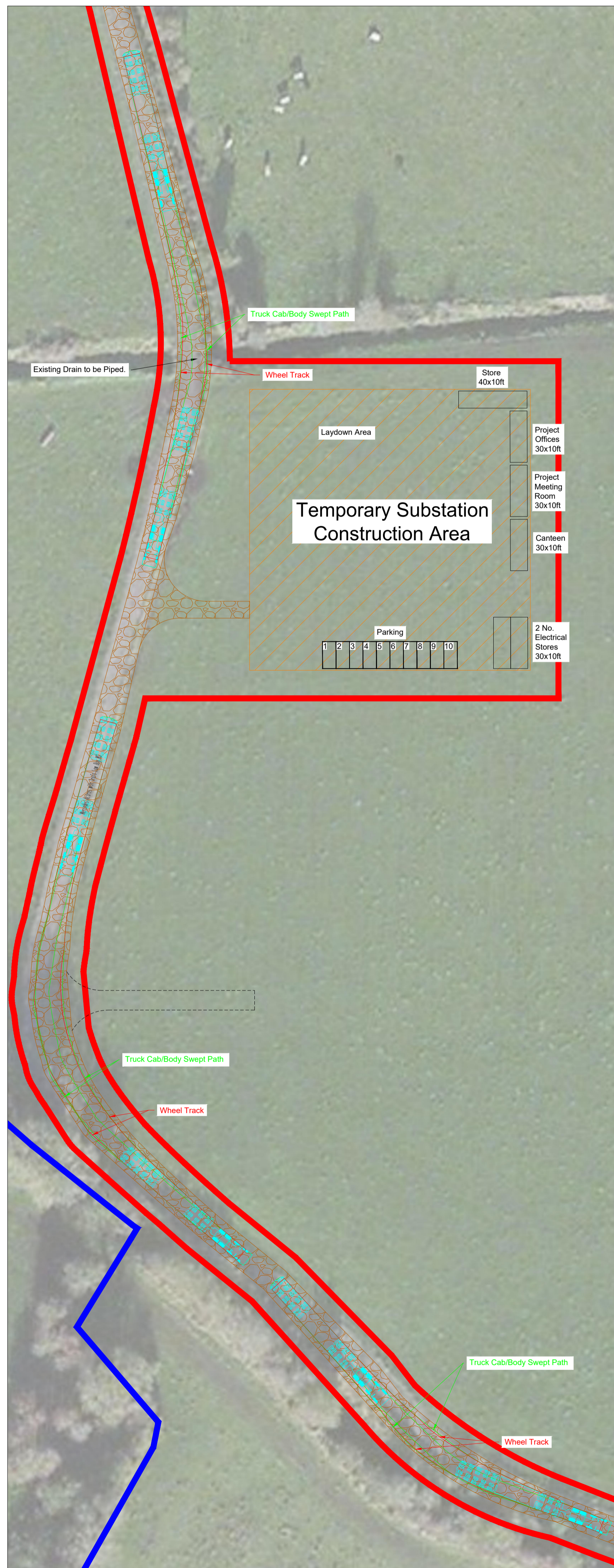




Auto Track - Straight Section Scale 1:500



Auto Track - Bends At Site Compound Area Scale 1:500



Auto Track - Bends At Junction 1 Scale 1:500

DO NOT SCALE FROM THIS DRAWING. USE FIGURED DIMENSIONS IN ALL CASES. VERIFY DIMENSIONS ON SITE AND REPORT ANY DISCREPANCIES TO THE DESIGNERS IMMEDIATELY. THIS DRAWING IS TO BE READ IN CONJUNCTION WITH THE DESIGNERS SPECIFICATION. © THIS DRAWING IS COPYRIGHT AND MAY ONLY BE REPRODUCED WITH THE DESIGNERS PERMISSION.

NOTES:

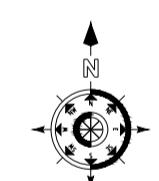
1. ALL DRAWINGS ARE TO BE READ IN CONJUNCTION WITH ALL RELEVANT SPECIFICATIONS, BILLS OF QUANTITIES, ARCHITECTURAL, SERVICES AND ENGINEERING DRAWINGS.
2. ALL LEVELS ARE IN METRES RELATED TO ORDANCE DATUM MALIN HEAD.
3. ANY DISCREPANCIES BETWEEN THESE DOCUMENTS SHALL BE BROUGHT TO THE ATTENTION OF THE ENGINEER.
4. DRAWINGS ARE NOT TO BE SCALED.
5. ALL DIMENSIONS ARE IN MILLIMETRES, UNLESS NOTED OTHERWISE.

Legend :

	Site Access
	Site Notice
	Development Boundary
	Ownership Boundary
	Temporary Substation Construction Area
	Overhead Line
	Substation Access Road
	Solar Farm Access Road

Note :

Refer To Drawing 20205-5033 For Key Plan.



B	26.07.2020	ISSUED FOR PLANNING	NT	JOL
A	23.01.2020	ISSUED FOR PLANNING	NT	JOL
REV	DATE	DESCRIPTION	BY	APP

PROJECT: HARRISTOWN 110KV SUBSTATION

TITLE: ACCESS ROAD AUTO-TRACK SHEET 2 OF 3

CLIENT: H&MV ENGINEERING

Malachy Walsh and Partners
Engineering and Environmental Consultants
Cork | Tralee | London | Limerick

Reen Point, Blennerville, Tralee, Co. Kerry, V92 XZTK
Tel: +353 (0) 66 7123404
Fax: +353 (0) 66 7126586
E-mail: tralee@mwp.ie
Web: www.mwp.ie

DRAWN: AS CHECKED: NT APPROVED: JOL

DATE: 13.06.2019 SCALE @ A1: AS SHOWN

PROJECT NUMBER: 20205 DRAWING STATUS:

DRAWING NUMBER: 20205-MWP-SS-00-DR-C-5034 REV: B

N:\projects\20205 - Harristown 110KV Subst Planning\Drawing\Cabinets\20205-5033-6034-B (Auto Track).dwg